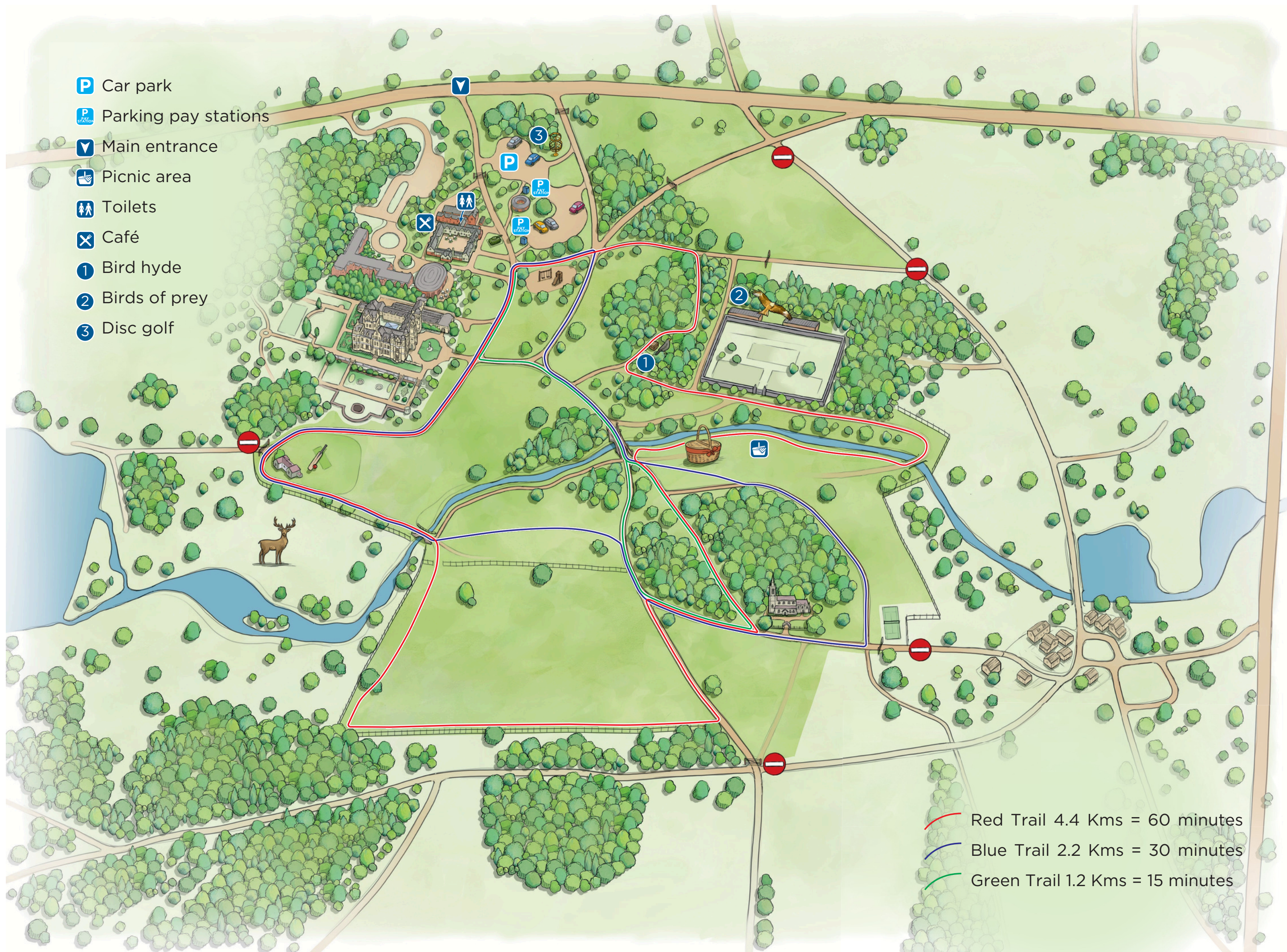





-  Car park
-  Parking pay stations
-  Main entrance
-  Picnic area
-  Toilets
-  Café
-  1 Bird hyde
-  2 Birds of prey
-  3 Disc golf



-  Red Trail 4.4 Kms = 60 minutes
-  Blue Trail 2.2 Kms = 30 minutes
-  Green Trail 1.2 Kms = 15 minutes